



VENERA COURT

PROJECT DETAIL

alez_

developments

Site Location

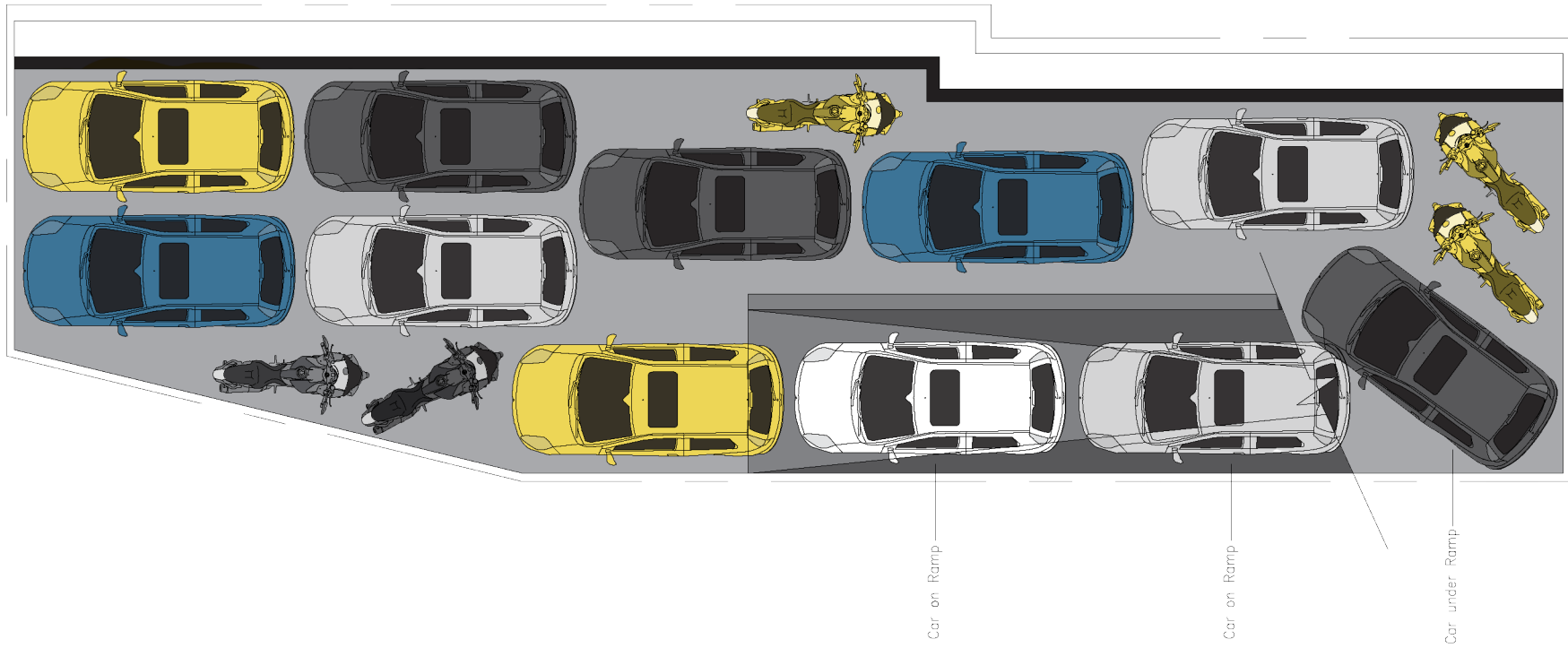


VENERA COURT

125, TRIQ BARTH
SANTA VENERA

[CLICK FOR GOOGLE LOCATION](#)

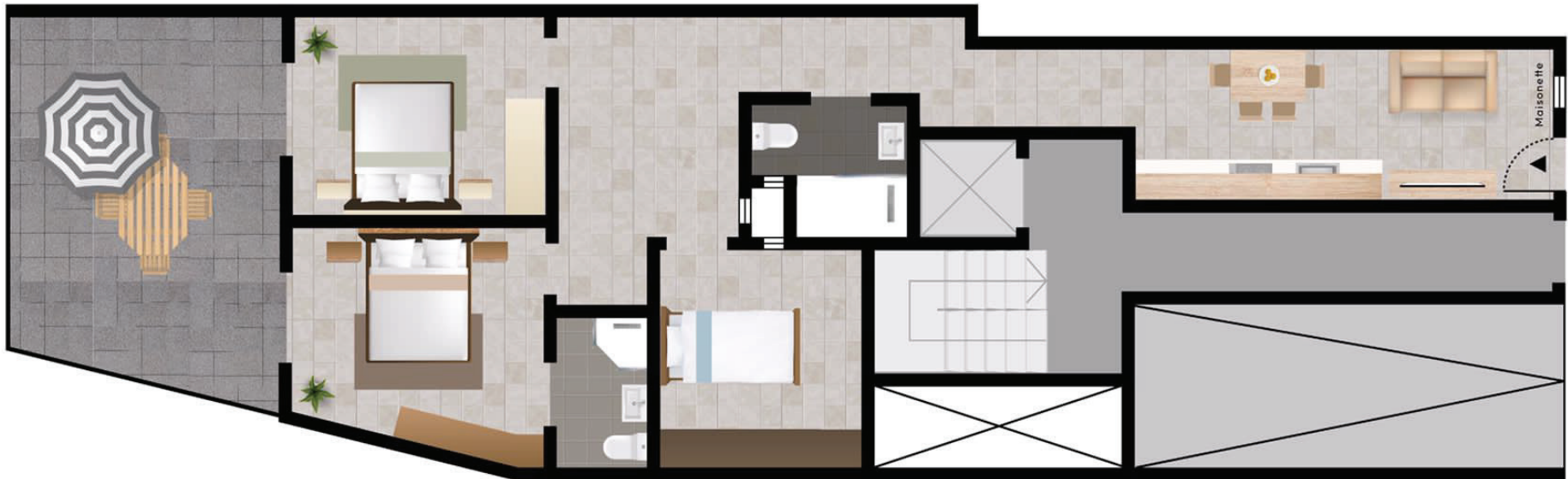
BASEMENT FLOOR PLAN



Detailed Plans

Ground Floor Maisonette

GROUND FLOOR PLAN



UNIT REF.	INTERNAL AREA(m ²)	EXTERNAL AREA(m ²)	TOTAL(m ²)
MAS1	82	22.95	104.95

Detailed Plans

Apartments

1ST FLOOR PLAN



UNIT REF.	INTERNAL AREA(m ²)	EXTERNAL AREA(m ²)	TOTAL(m ²)
APT1	49.6	5.4	55
APT2	64	5.0	69

Detailed Plans

Apartments

2ND FLOOR PLAN



UNIT REF.	INTERNAL AREA(m ²)	EXTERNAL AREA(m ²)	TOTAL(m ²)
APT3	49.6	5.4	55
APT4	64	5.0	69

Detailed Plans

Apartments

3RD FLOOR PLAN



UNIT REF.	INTERNAL AREA(m ²)	EXTERNAL AREA(m ²)	TOTAL(m ²)
APT5	49.6	5.4	55
APT6	51.6	5.1	56.7

Detailed Plans

Penthouse Level

PENTHOUSE FLOOR PLAN



UNIT REF.	INTERNAL AREA(m ²)	EXTERNAL AREA(m ²)	TOTAL(m ²)
PH1	49.7	14.3	64
PH2	50.5	14.5	65

Detailed Plans

Illustrative Renders - Common Parts



Detailed Plans

Illustrative Renders - Street Scape



Detailed Plans

Illustrative Renders - Facade



Project Summary

VENERA COURT

125, TRIQ BARTH, SANTA VENERA

alezdevelopments.mt

Project Summary

Units Available

October 2023
Commencement Date

September 2024
Completion Date

UNIT	FLOOR	TOTAL AREA	PRICE
10 Car Garage	Basement	165 sqm	€275,000
Maisonette (4 Bedroom)	Ground	120 sqm	€290,000
Apt 1 (1 Bedroom)	First	60 sqm	SOLD
Apt 2 (1 Bedroom & Study)	First	65 sqm	SOLD
Apt 3 (1 Bedroom)	Second	60 sqm	SOLD
Apt 4 (1 Bedroom & Study)	Second	65 sqm	SOLD
Apt 5 (1 Bedroom)	Third	60 sqm	SOLD
Apt 6 (1 Bedroom)	Third	65 sqm	€169,000
Penthouse (1 Bedroom)	Fourth	60 sqm	SOLD
Penthouse (1 Bedroom)	Fourth	65 sqm	€219,000

PAYMENT TERMS

10% deposit to be given directly to developer.

80% to be given on roofing of your property.

10% to be given on finishing of common areas, incl. lift installation.

Buyers will form part of an association which will be governed by the condominium act.

Apartments to be sold advanced shell form, common areas, lighting, fittings, tiles and lift.



ADVANCED SHELL FORM FINISHING LIST

- (i) Platering of facade with sillicato
- (ii) Water and electricity for common areas
- (iii) Installation of lift and of three-phase meter as an electrical supply for common areas
- (iv) Plastering of lift shaft
- (v) Plastering of internal service shafts
- (vi) Provision and installation of front, back and internal apertures of the apartments
- (vii) Provision and installation front door of common entrance & door of maisonette ground-floor entrance
- (viii) Installation of aluminium railings on balconies
- (ix) Installation of water membrane and tiles on balconies
- (x) Intallation of alumnium staircase railing in common areas



info@alezdevelopments.mt
+356 79208295 / +356 99043990
alezdevelopments.mt