



# PIETA COURT

**PROJECT DETAIL**

**alez-**  
developments

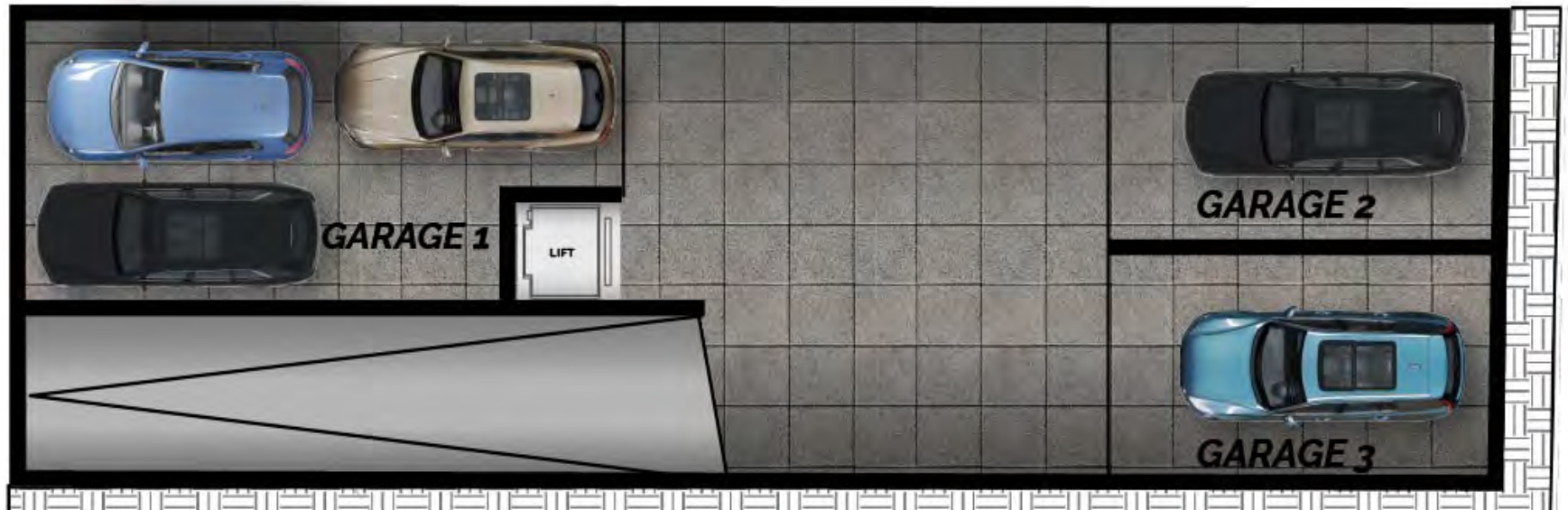
# SITE LOCATION



## PIETA COURT

Triq Joe Sciberras,  
Pieta

# BASEMENT FLOOR



GARAGE 1

PRICE:

**€150,000**

GARAGE 2

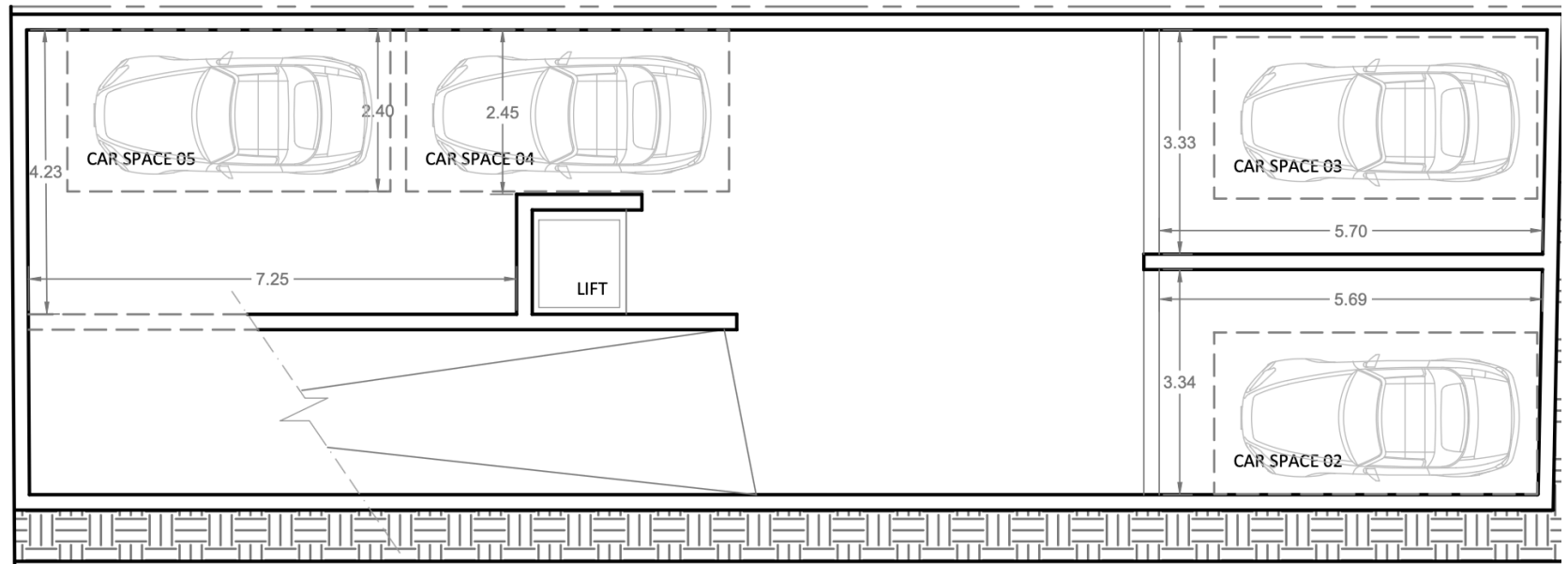
PRICE:

**SOLD**

GARAGE 3

PRICE:

**€75,000**



# GROUND FLOOR



MAS 1  
PRICE:

€445,000



3 BEDROOMS



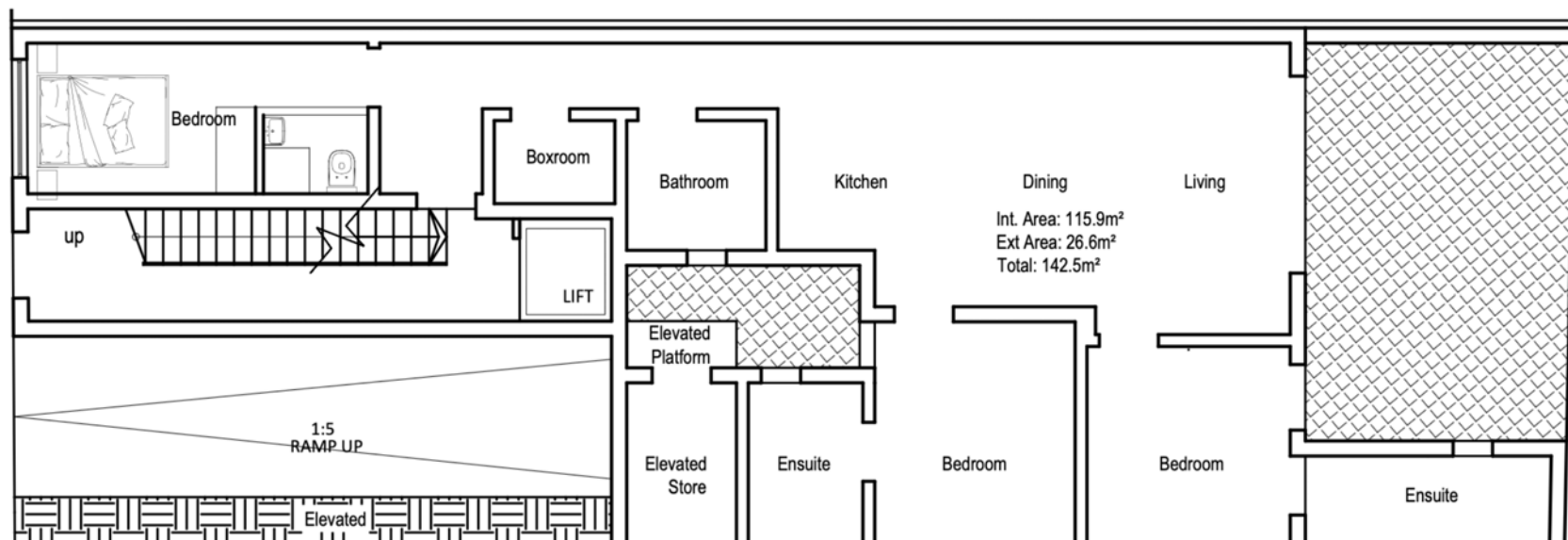
4 BATHROOMS



INTERNAL: EXTERNAL:  
116 S.Q.M 27 S.Q.M

TOTAL AREA:  
143 S.Q.M

3



APT 1  
PRICE:  
**SOLD**

## 2 BEDROOMS

### 3 BATHROOMS

INTERNAL: 81 S.Q.M

TOTAL AREA:  
90 S.Q.M

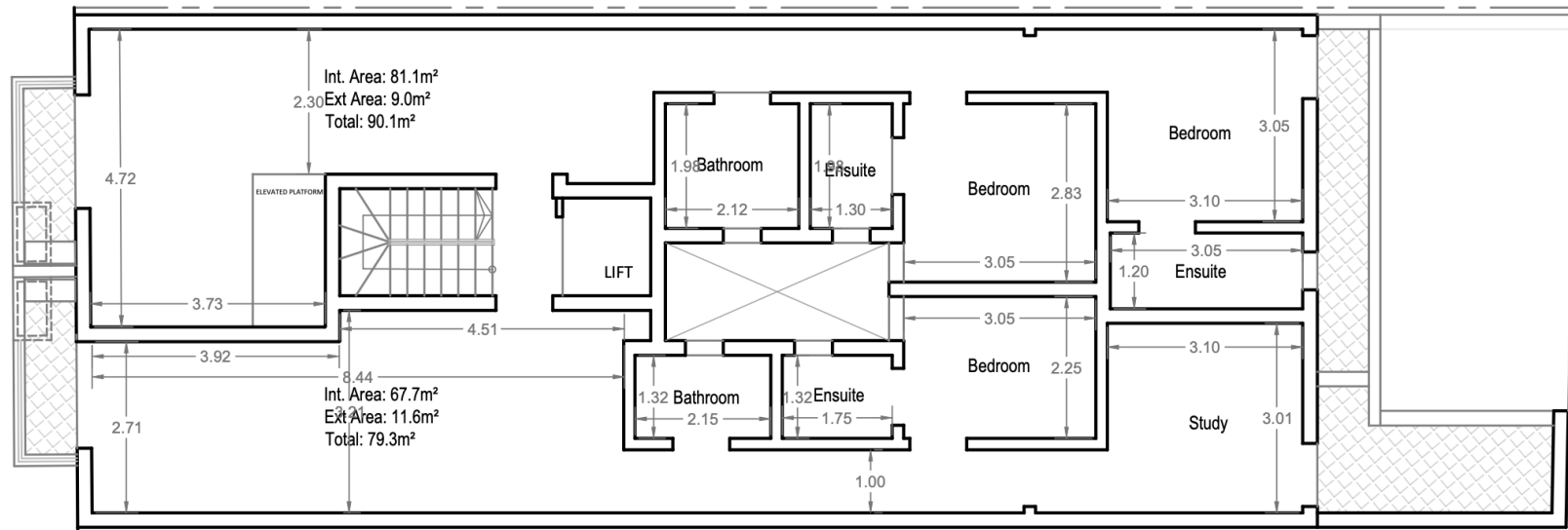
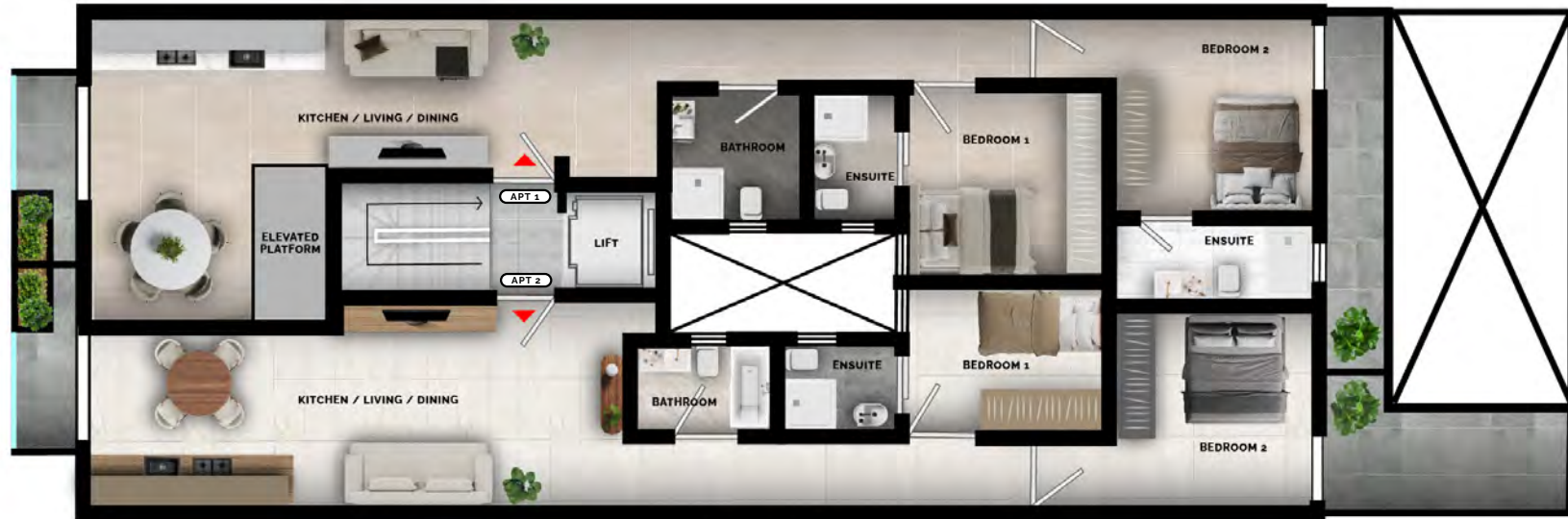
APT 2  
PRICE:  
**€295,000**

## 2 BEDROOMS

## 2 BATHROOMS

INTERNAL: 67 S.Q.M      EXTERNAL: 12 S.Q.M

TOTAL AREA:  
**79 S.Q.M**



# SECOND FLOOR



APT 3  
PRICE:  
**SOLD**



2 BEDROOMS



3 BATHROOMS



INTERNAL: EXTERNAL:  
81 S.Q.M 9 S.Q.M

TOTAL AREA:  
**90 S.Q.M**



APT 4  
PRICE:  
**€300,000**



2 BEDROOMS



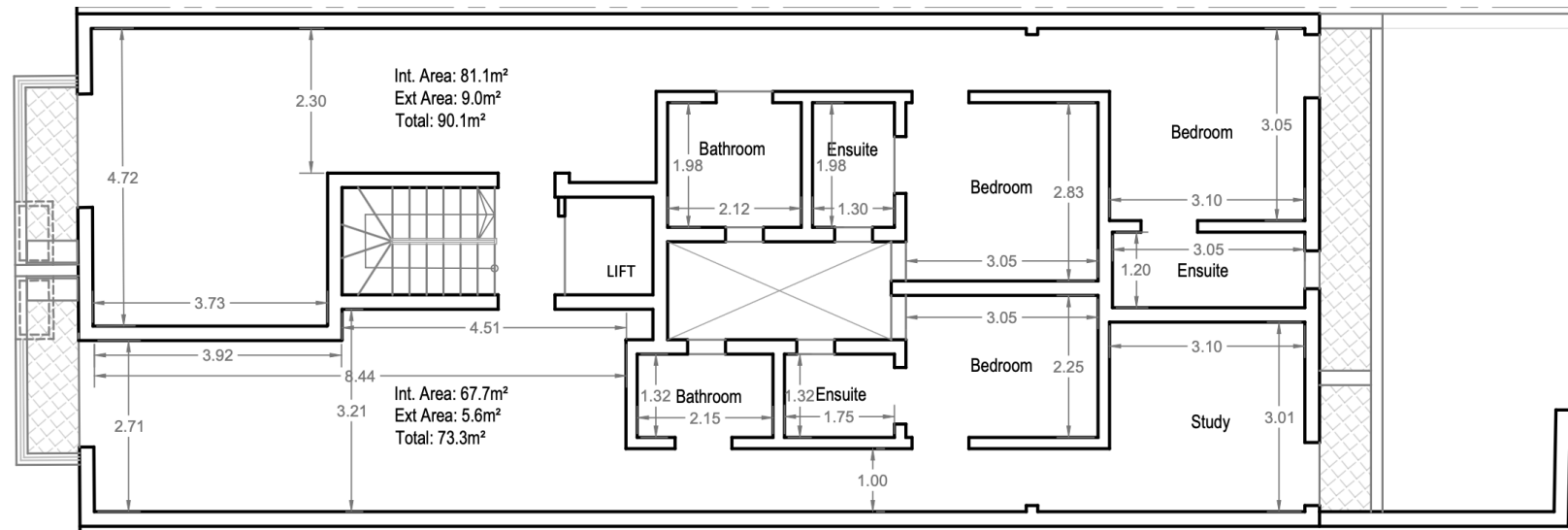
2 BATHROOMS



INTERNAL: EXTERNAL:  
68 S.Q.M 5 S.Q.M

TOTAL AREA:  
**73 S.Q.M**

5



# THIRD FLOOR



APT 5  
PRICE:

€315,000



2 BEDROOMS



3 BATHROOMS



INTERNAL: 81 S.Q.M  
EXTERNAL: 9 S.Q.M

TOTAL AREA:  
90 S.Q.M



APT 6  
PRICE:

€305,000



2 BEDROOMS



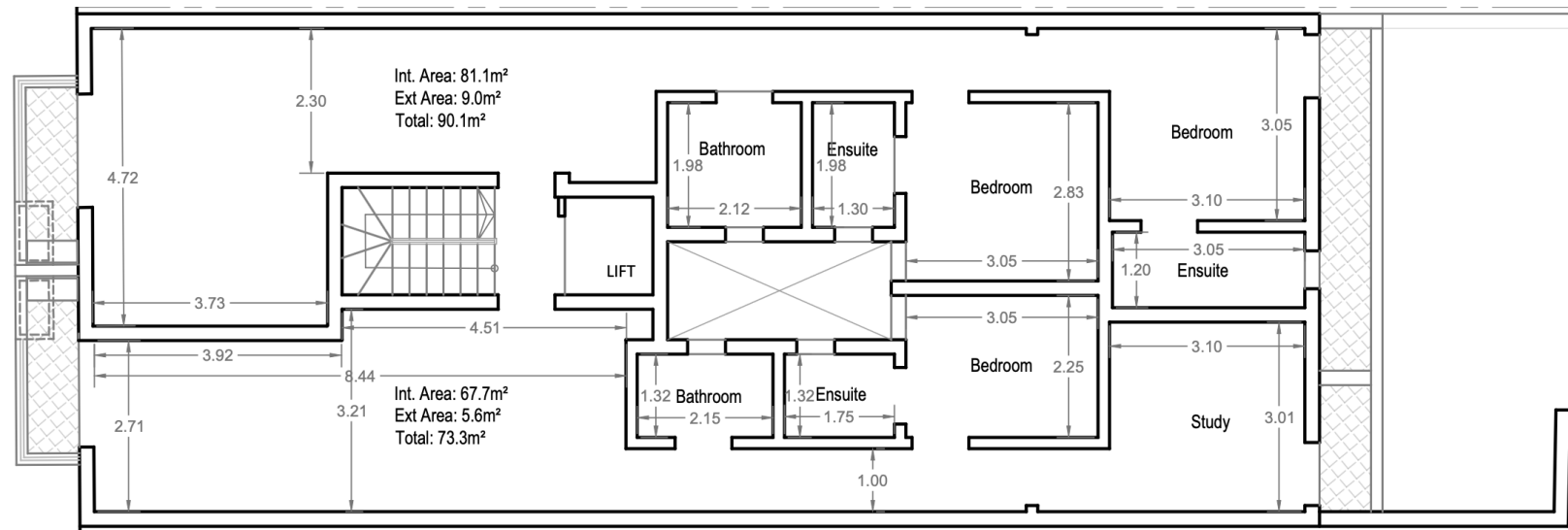
2 BATHROOMS



INTERNAL: 68 S.Q.M  
EXTERNAL: 5 S.Q.M

TOTAL AREA:  
73 S.Q.M

6



# RECEDED FLOOR



PH 1  
PRICE:

€310,000



1 BEDROOMS



1 BATHROOMS



INTERNAL: 50 S.Q.M  
EXTERNAL: 20 S.Q.M

TOTAL AREA:  
70 S.Q.M



PH 2  
PRICE:

SOLD



1 BEDROOMS

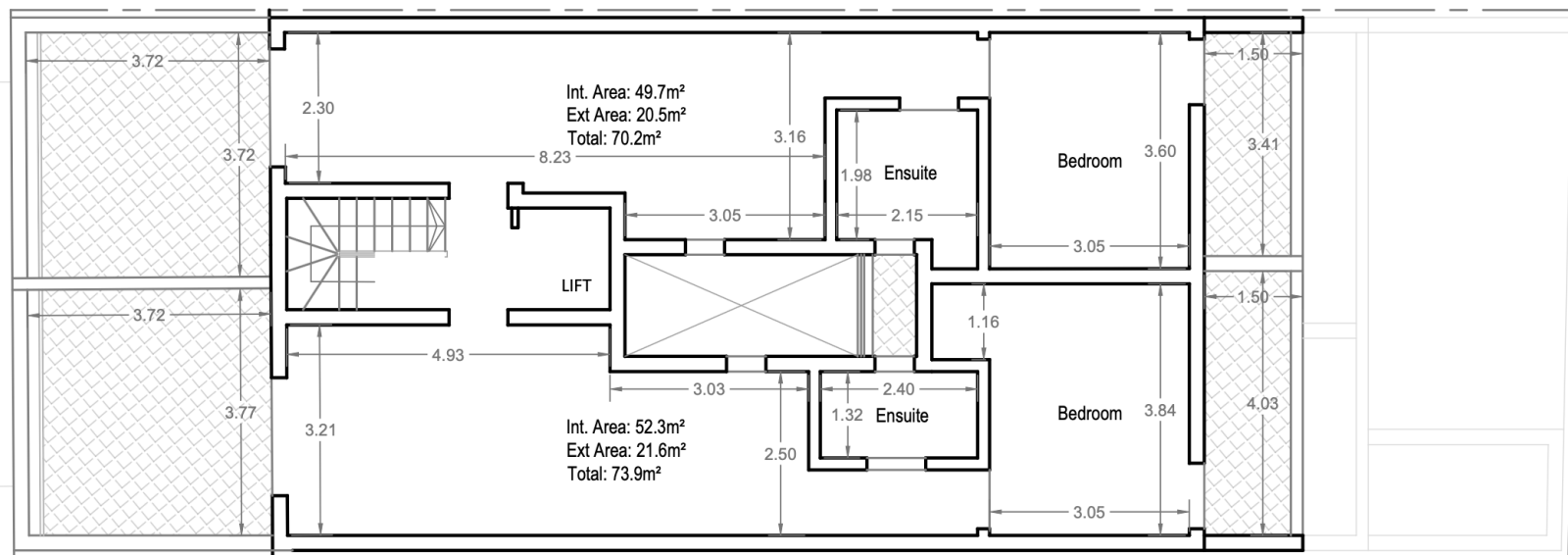
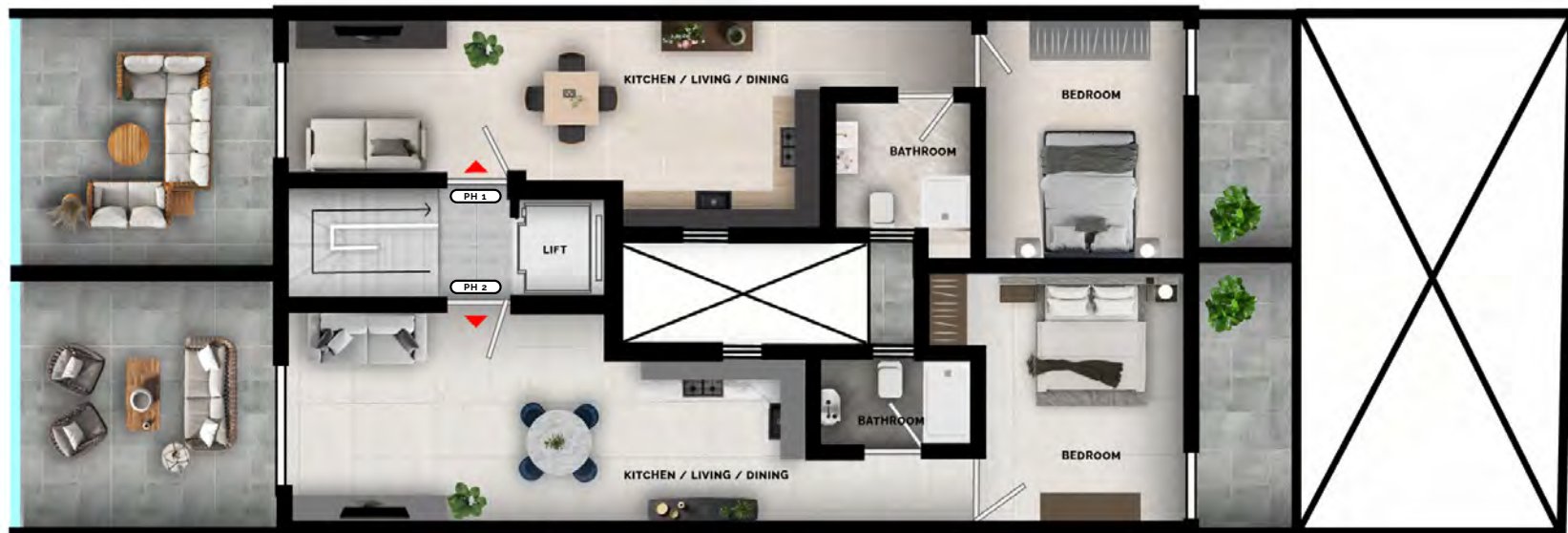


1 BATHROOMS



INTERNAL: 52 S.Q.M  
EXTERNAL: 22 S.Q.M

TOTAL AREA:  
74 S.Q.M



# ILLUSTRATIVE RENDERS



8

## COMMON PARTS



# ILLUSTRATIVE RENDERS

9

## COMMON PARTS

# ILLUSTRATIVE RENDERS



10

## COMMON PARTS

# ILLUSTRATIVE RENDERS



COMMON PARTS

# ILLUSTRATIVE RENDERS



12

FACADE

# PROJECT SUMMARY

## PIETA COURT

Triq Joe Sciberras,  
Pieta

[alezdevelopments.mt](http://alezdevelopments.mt)

### PROJECT SUMMARY

## UNITS AVAILABLE

**FEBRUARY 2025**  
commencement date

**NOVEMBER 2026**  
completion date

FLOOR	UNIT	BEDROOMS	BATHROOMS	INT. SQM	EXT. SQM	TOTAL SQM	PRICE
Basement	Garage 1						€ 150,000
Basement	Garage 2						SOLD
Basement	Garage 3						€ 75,000
Ground	Maisonette	3	4	116	27	143	€ 445,000
First	Apt 1	2	3	81	9	90	SOLD
First	Apt 2	2	2	68	5	73	€ 295,000
Second	Apt 3	2	3	81	9	90	SOLD
Second	Apt 4	2	2	68	5	73	€ 300,000
Third	Apt 5	2	3	81	9	90	€ 315,000
Third	Apt 6	2	2	68	5	73	€ 305,000
Receded	Ph 1	1	1	50	20	70	€ 310,000
Receded	Ph 2	1	1	52	22	74	SOLD

### PAYMENT TERMS

10% deposit to be given directly to developer.

80% to be given on roofing of your property.

Final 10% to be paid on handing over of unit in finished state

Buyers will form part of an association which will be governed by the condominium act.

Apartments to be sold fully finished (inc. bathrooms & doors), common areas, lighting, fittings, tiles and lift.

# PROJECT SUMMARY

## PIETA COURT

Triq Joe Sciberras,  
Pieta

[alezdevelopments.mt](http://alezdevelopments.mt)

### FINISHING LIST

Units to be finished with bathrooms and doors

1. Plastering of facade with sillicato
2. Internal plastering of units (walls and ceiling) with a coat of paint including primer
3. Mechanical and electrical works in units and common areas
4. Supply and installation of water tank for all residential units
5. Supply and installation of bathrooms and tiling including shower tray, cubicle, toilet and vanity
6. Supply and installation of floor tiles in all residential units
7. Installation of lift and of three-phase meter as an electrical supply for common areas
8. Supply and installation of passenger lift for common areas
9. Plastering of lift shaft
10. Plastering of internal service shafts
11. Provision and installation of front, back and internal apertures for all residential units
12. Supply and installation all internal doors for units, including of common areas
13. Installation of aluminium railings in common areas, facade
14. Installation of water membrane and tiles on balconies



# alez\_

---

developments

info@alezdevelopments.mt  
+356 79208295 / +356 99043990  
**alezdevelopments.mt**